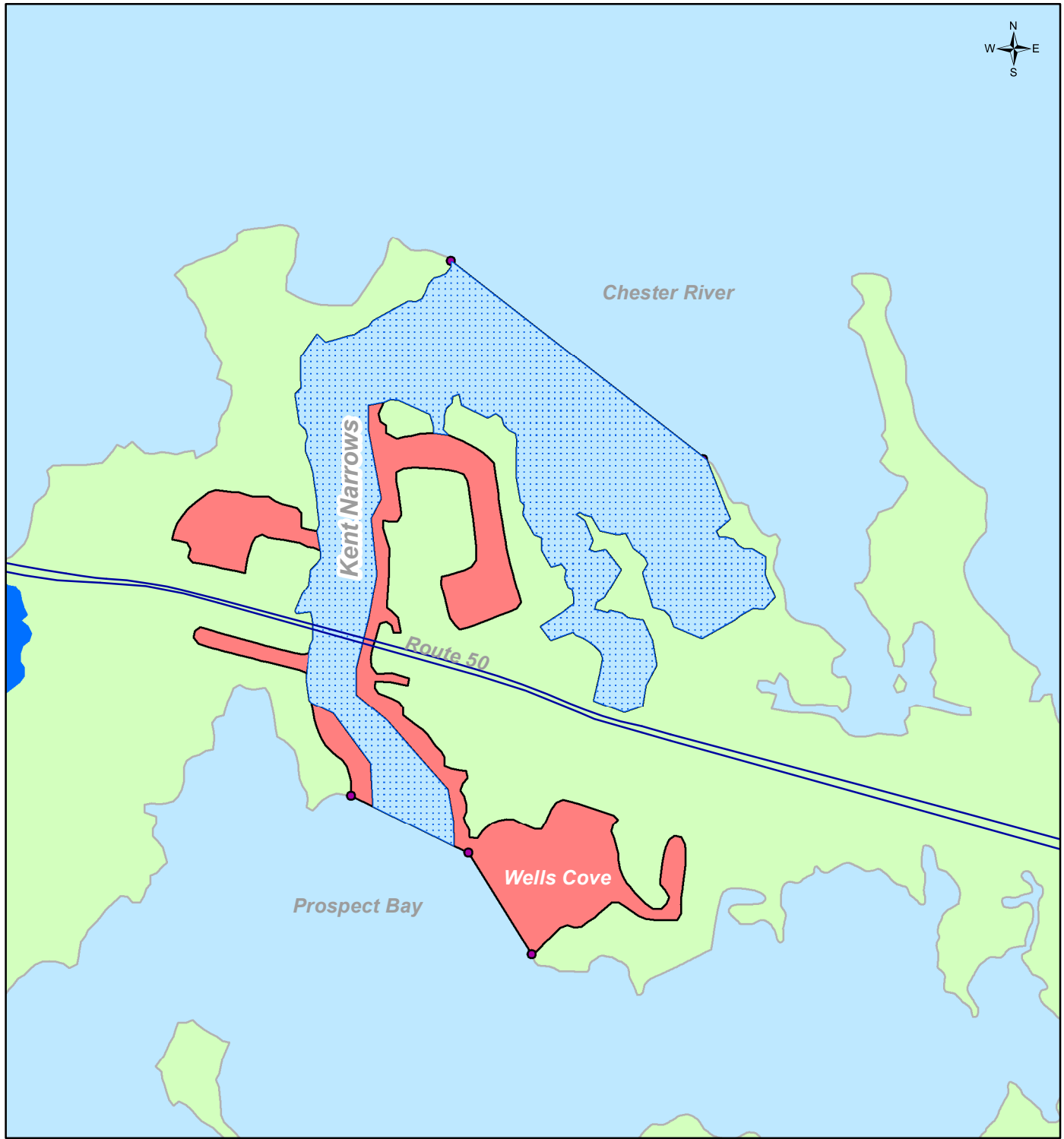




# Notice of Changes to Shellfish Waters



0 0.375 0.75 Miles

Kent Narrows, Queen Anne's County  
Prohibited Shellfish Area Map 14  
February 2017

-  Opened By This Letter
-  Remains Restricted By This Letter



Lawrence J. Hogan, Jr., Governor  
Boyd K. Rutherford, Lieutenant Governor  
Ben Grumbles, Secretary